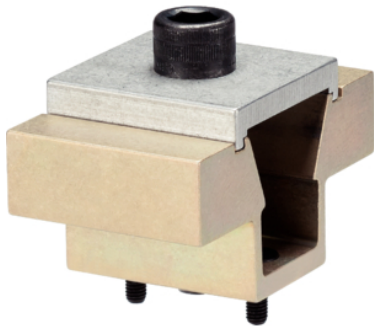


Double Edge Clamps • machinable chucks

23251.0112



Product Description

Inserting the socket head screw moves the two clamping chucks outwards and presses the workpiece against a stop. The chucks can be machined to the needed workpiece contour. The locking plate is needed only for this machining, not for the workpiece clamping.

Material

- Body**
 - Aluminium
- Taper**
 - Case-hardened steel, blackened
- Screw**
 - Steel
- Locking plate**
 - Aluminium

Assembly

Can be mounted in a threaded hole or with T-nuts for horizontal or vertical multiple clamping.

More information

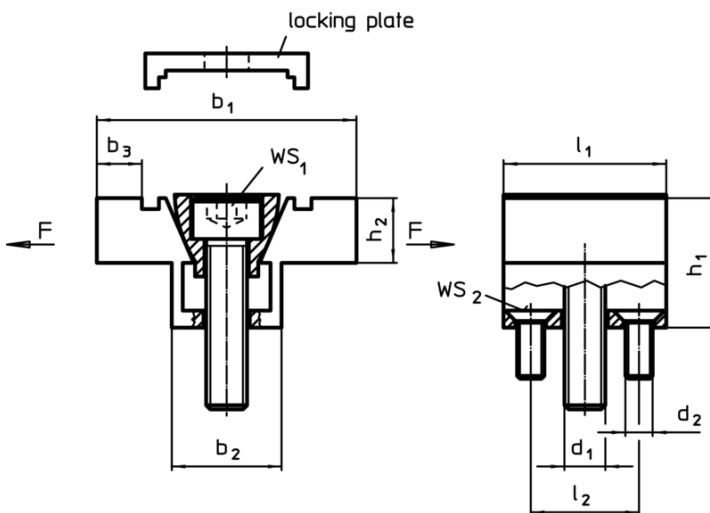
Accessories

T-Nuts EH 23010, have to be purchased separately.

Further products

- Nuts for T-slots, DIN 508

Drawing



Order information

Dimensions										WS ₁	WS ₂	Clamping force max.	Tightening torque max.	Art. No.	
b ₁	b ₂	b ₃ ¹⁾	h ₁	h ₂	l ₁	l ₂	d ₁	d ₂		[mm]	[mm]	[kN]	[Nm]		[g]
76,2	30,9	14,8	38,1	19,1	47,5	30,5	M12	M5		10	3	15,6	38,4	443	23251.0112

¹⁾ machinable material allowance

Application example

