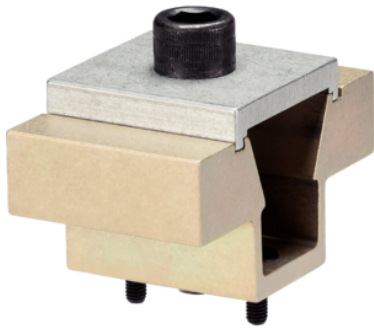


## Double Edge Clamps • machinable chucks

23251.0108



### Product Description

Inserting the socket head screw moves the two clamping chucks outwards and presses the workpiece against a stop. The chucks can be machined to the needed workpiece contour. The locking plate is needed only for this machining, not for the workpiece clamping.

### Material

#### Body

- Aluminium

#### Taper

- Case-hardened steel, blackened

#### Screw

- Steel

#### Locking plate

- Aluminium

### Assembly

Can be mounted in a threaded hole or with T-nuts for horizontal or vertical multiple clamping.

### More information

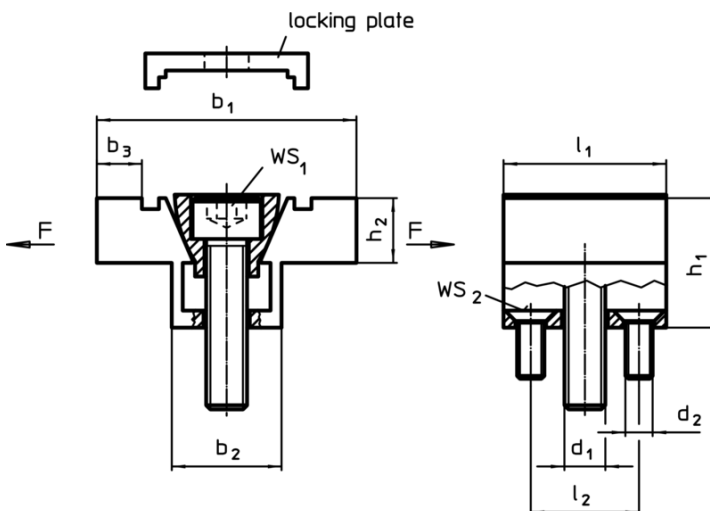
#### Accessories

T-Nuts EH 23010. have to be purchased separately.

#### Further products

- Nuts for T-slots, DIN 508

### Drawing



### Order information

Dimensions									WS <sub>1</sub>	WS <sub>2</sub>	Clamping force max.	Tightening torque max.	Art. No.	
b <sub>1</sub>	b <sub>2</sub>	b <sub>3</sub> <sup>1)</sup>	h <sub>1</sub>	h <sub>2</sub>	l <sub>1</sub>	l <sub>2</sub>	d <sub>1</sub>	d <sub>2</sub>	[mm]	[mm]	[kN]	[Nm]		[g]
50,8	20,8	9,9	25,4	12,7	31,8	20,6	M8	M4	6	2,5	8,9	14,5	136	23251.0108

<sup>1)</sup> machinable material allowance

Application example

