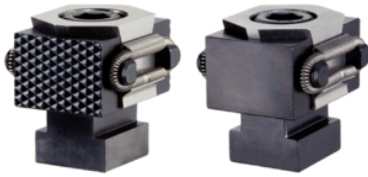


Taper Clamping Units - flat / ribbed, M12

23250.0512

Product Description

Inserting the socket head screw moves the two clamping chucks outwards and presses the workpieces against a stop. Stroke of taper clamping units with M8 = +/- 0.5 mm, M12 = +/- 1 mm.



Material

Body

- Tool steel, hardened, bright

Screw

- Heat-treated steel, tempered, quality 12.9

Spring

- Spring steel wire

Clamping Jaws

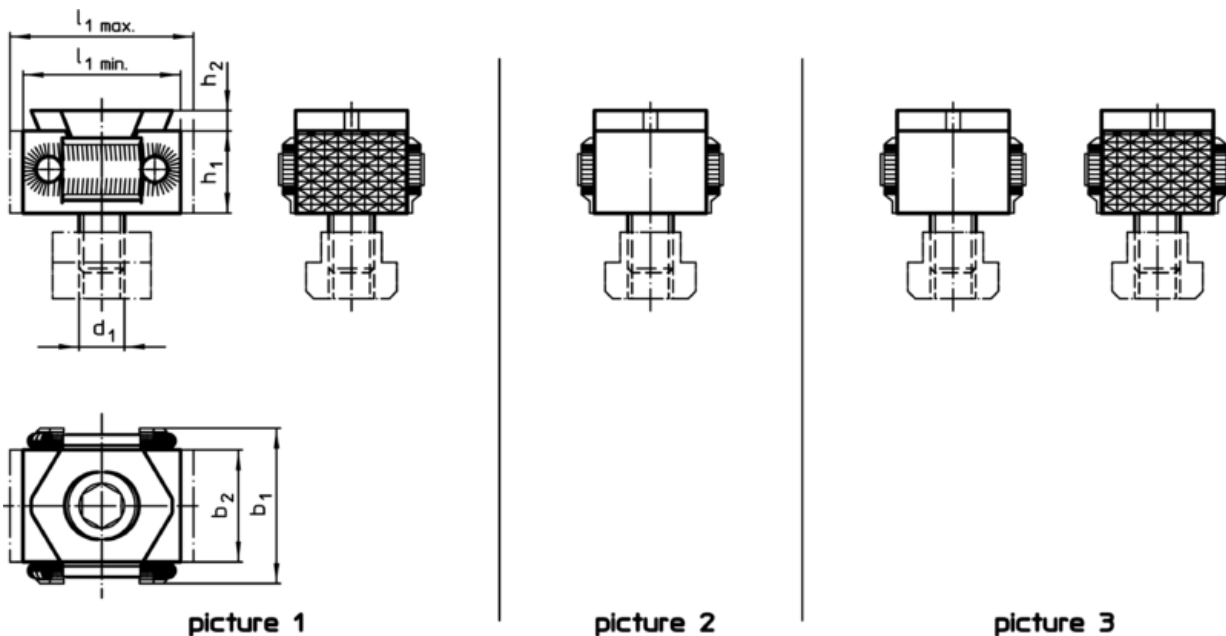
- Tool steel, hardened, blackened and ground

More information

Further products

- Taper Clamping Units

Drawing



Order information

Dimensions							[g]	Art. No.
d ₁	l ₁ min.	l ₁ max.	b ₁	b ₂	h ₁	h ₂		
clamping jaw plain and ribbed – picture 3								
M12	42	49	41	30	22	4	280	23250.0512