

Locating Clamps

23230.0050

Product Description

Suitable for a simultaneous "positioning" and "clamping" of workpieces. The locating element is a precision element which can be assembled from either side. The clamping and locating part adapted to the workpiece is screwed to the cylindrical support. Clamping and locating parts are manufactured by the user according to the individual requirements.



Material

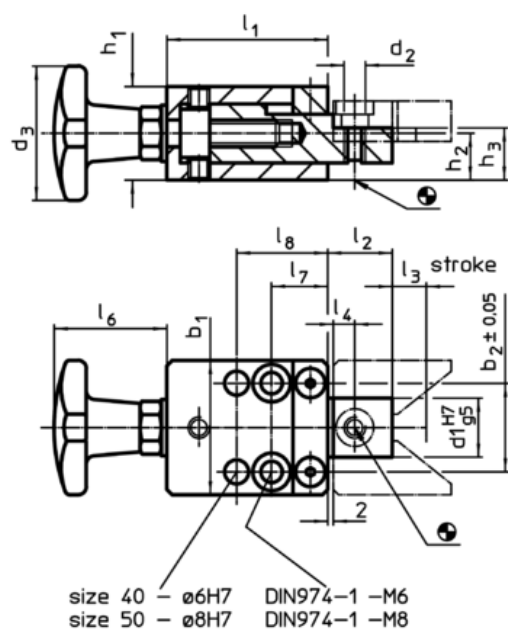
Handle

- Grey cast iron DIN 6335, orange plastic-coated

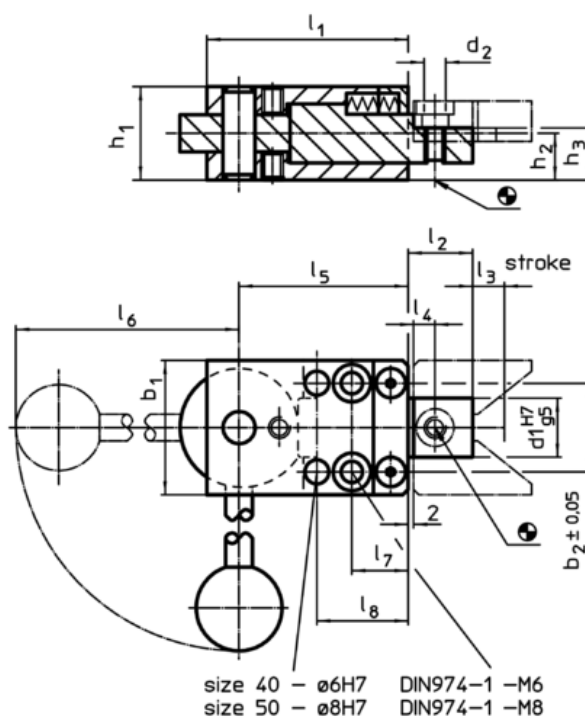
Clamp

- Steel, case-hardened, blackened, ground

Drawing



picture 1



picture 2

Order information

Dimensions															Art. No.
b ₁	b ₂ ±0,05	d ₁ H7 g5	d ₂	d ₃	h ₁	h ₂	h ₃	l ₁	l ₂	l ₃	l ₄	l ₆	l ₇	l ₈	
[mm]															[g]
with palm grip – picture 1															
50	33	22	M8	50	34,8	17,4	19,4	60	24	10	10	42	21	34	862 23230.0050

Application example

