

Clamps• slotted, with adjustable counter piece, with stud

23185.0220



Product Description

The thrust pad and the counter element are connected with the clamp and therefore secured against loss. Consequently, the clamp is quickly ready for use. The clamp is equipped with two flat noses and can be turned around depending on the case of application.

Material

Screw

- Heat-treated steel

Nut

- Heat-treated steel

Disc

- Heat-treated steel

Clamp

- Steel, tempered, zinc-plated by galvanization, black

More information

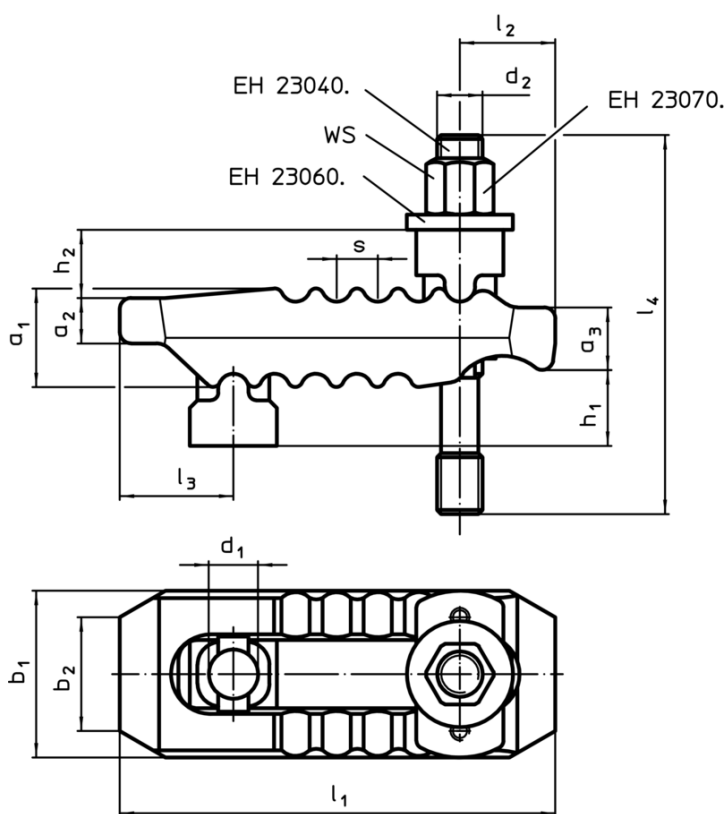
References

Larger clamping heights can be reached by the use of a support extension (EH 23185.).

Further products

- Support Extensions, for straight clamps, slotted, with adjustable counter piece

Drawing



Order information

| Nominal dimension d_1 [mm] | Dimensions | | | | | | | | | | | | | WS [mm] | Clamping force ¹⁾ max. [kN] | 📦 [g] | Art. No. |
|------------------------------------|------------|-------|--------|-------|-------|-------|-------|-------|-------|-------|-------|-------|-----|------------|--|----------|------------|
| | d_2 | l_4 | h_1 | h_2 | a_1 | a_2 | a_3 | b_1 | b_2 | l_1 | l_2 | l_3 | s | | | | |
| 21 | M20 | 160 | 0 – 40 | 30 | 42 | 20 | 27 | 62 | 30 | 187 | 44 | 44 | 14 | 30 | 60 | 2750 | 23185.0220 |

¹⁾ stated clamping forces in optimal clamping position (smallest distance of the socket head screw to the clamping position). Clamping forces can vary depending on clamping, strength class of the socket head screw and condition of the thread (lubrication).

Application example

