

## Clamps• slotted, with adjustable counter piece

23185.0025

### Product Description

The thrust pad and the counter element are connected with the clamp and therefore secured against loss. Consequently, the clamp is quickly ready for use. The clamp is equipped with two flat noses and can be turned around depending on the case of application.



### Material

- Steel, tempered, zinc-plated by galvanization, black

### More information

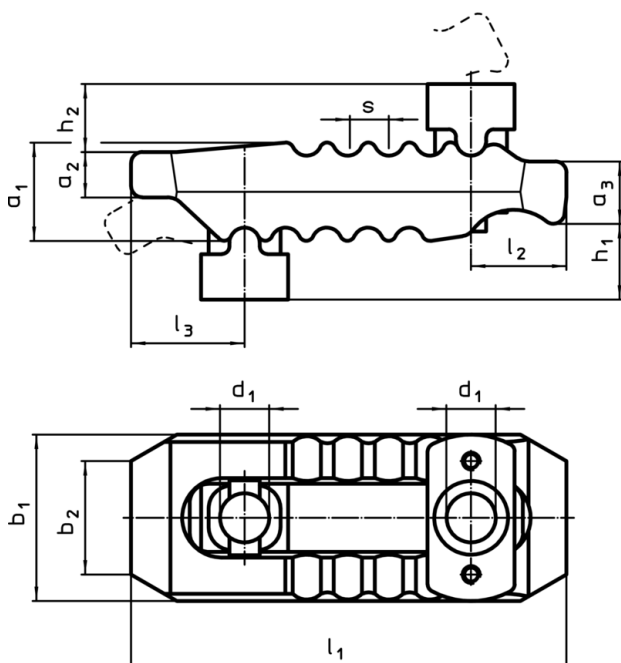
### References

Larger clamping heights can be reached by the use of a support extension (EH 23185.). T-bolts DIN 787 (EH 23030.) or alternatively studs DIN 6379 (EH 23040.) can be used for the clamping.


### Further products

- Support Extensions, for straight clamps, slotted, with adjustable counter piece

### Drawing



### Order information

| Nominal dimension<br>$d_1$<br>[mm] | Dimensions |       |       |       |       |       |       |       |       |       |     | T-slot size<br>[mm] | Clamping force <sup>1)</sup><br>max.<br>[kN] |  [g] | Art. No.   |
|------------------------------------|------------|-------|-------|-------|-------|-------|-------|-------|-------|-------|-----|---------------------|--|---|------------|
|                                    | $h_1$      | $h_2$ | $a_1$ | $a_2$ | $a_3$ | $b_1$ | $b_2$ | $l_1$ | $l_2$ | $l_3$ | $s$ |                     |  |   |            |
| 25                                 | 0 – 100    | 31    | 51    | 24    | 34    | 70    | 30    | 235   | 60    | 47    | 17  | 20, 22, 24, 28      | 75   | 3620  | 23185.0025 |

<sup>1)</sup> stated clamping forces in optimal clamping position (smallest distance of the socket head screw to the clamping position). Clamping forces can vary depending on clamping, strength class of the socket head screw and condition of the thread (lubrication).

Application example



