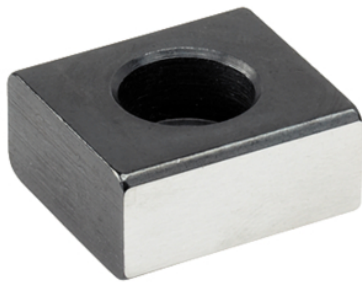


Low Slot Tenons

23130.0024



Product Description

To be used for locating fixtures and clamping elements onto machine tables with T-slots to DIN 650.

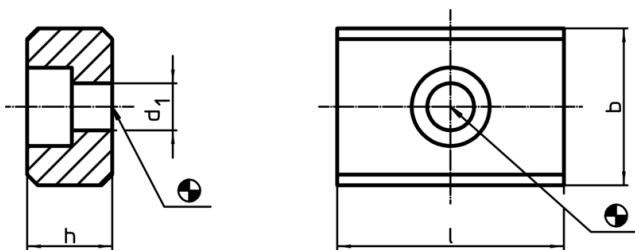
Material

- Steel, case-hardened, blackened, ground

Assembly

They are bolted into the alignment slots of the fixture. Low slot tenons are suitable for use where a fixture will only be used on machines having an identical slot width.

Drawing



Order information

b h6	Dimensions			For screws ISO 4762	Art. No.	
	h	l	d ₁			
[mm]			[mm]	[g]		
24	12	32	6,6	M6 x 16	64	23130.0024

Application example

