

## Low Slot Tenons

23130.0020

### Product Description

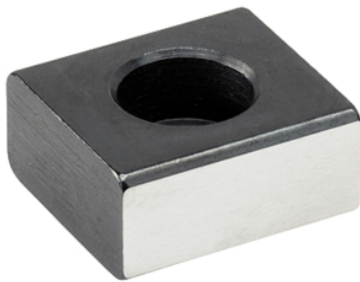
To be used for locating fixtures and clamping elements onto machine tables with T-slots to DIN 650.

### Material

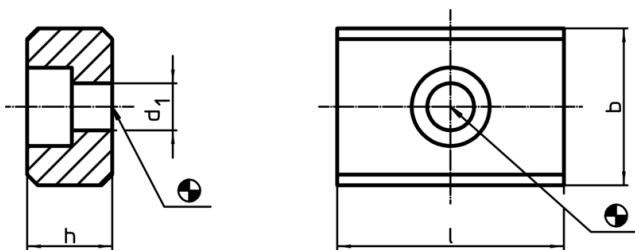
- Steel, case-hardened, blackened, ground

### Assembly


They are bolted into the alignment slots of the fixture. Low slot tenons are suitable for use where a fixture will only be used on machines having an identical slot width.



### Drawing



### Order information

b h6	Dimensions			For screws ISO 4762		Art. No.
	h	l	d <sub>1</sub>			
[mm]						
20	10	22	6,6	M6 x 16	[g] 28	23130.0020

### Application example

