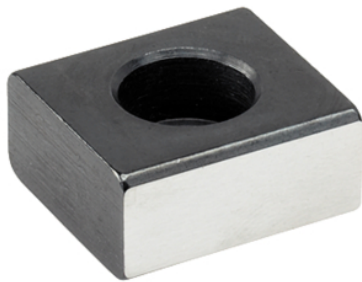


## Low Slot Tenons

23130.0018



### Product Description

To be used for locating fixtures and clamping elements onto machine tables with T-slots to DIN 650.

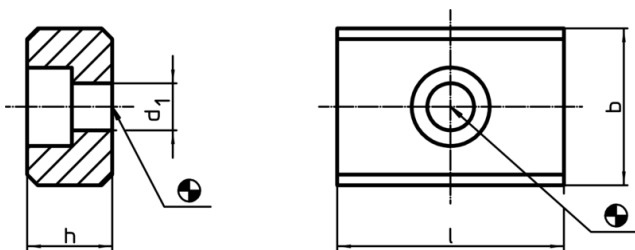
### Material

- Steel, case-hardened, blackened, ground

### Assembly

They are bolted into the alignment slots of the fixture. Low slot tenons are suitable for use where a fixture will only be used on machines having an identical slot width.

### Drawing



### Order information

b h6	Dimensions			For screws ISO 4762	[g]	Art. No.
	h	l	d <sub>1</sub>			
18	10	22	6,6	[mm] M6 x 16	25	23130.0018

### Application example

