

Low Slot Tenons

23130.0016

Product Description

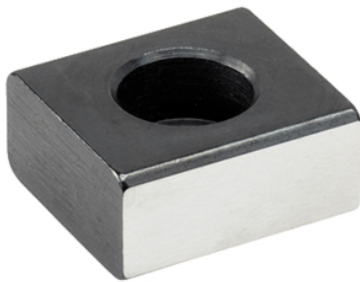
To be used for locating fixtures and clamping elements onto machine tables with T-slots to DIN 650.

Material

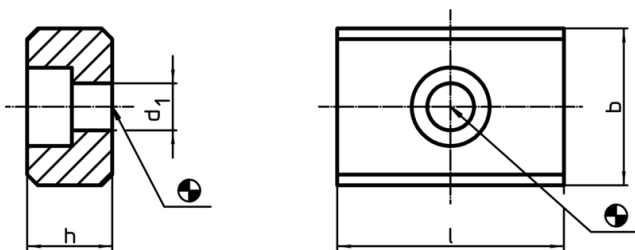
- Steel, case-hardened, blackened, ground

Assembly


They are bolted into the alignment slots of the fixture. Low slot tenons are suitable for use where a fixture will only be used on machines having an identical slot width.



Drawing



Order information

Dimensions				For screws ISO 4762		Art. No.
b h6	h	l	d ₁			
[mm]				[mm]	[g]	
16	10	22	6,6	M6 x 16	22	23130.0016

Application example

