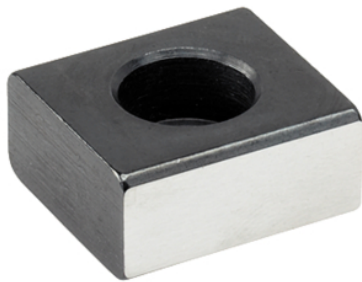


Low Slot Tenons

23130.0014



Product Description

To be used for locating fixtures and clamping elements onto machine tables with T-slots to DIN 650.

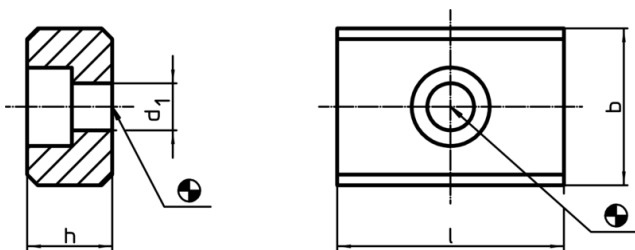
Material

- Steel, case-hardened, blackened, ground

Assembly

They are bolted into the alignment slots of the fixture. Low slot tenons are suitable for use where a fixture will only be used on machines having an identical slot width.

Drawing



Order information

b h6	Dimensions			For screws ISO 4762	[g]	Art. No.
	h	l	d ₁			
14	10	22	6,6	[mm] M6 x 16	18	23130.0014

Application example

