

Low Slot Tenons

23130.0012

Product Description

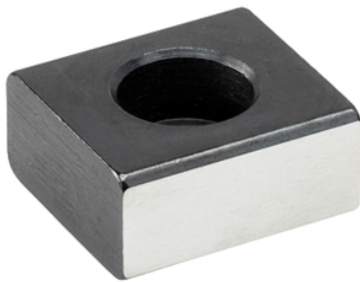
To be used for locating fixtures and clamping elements onto machine tables with T-slots to DIN 650.

Material

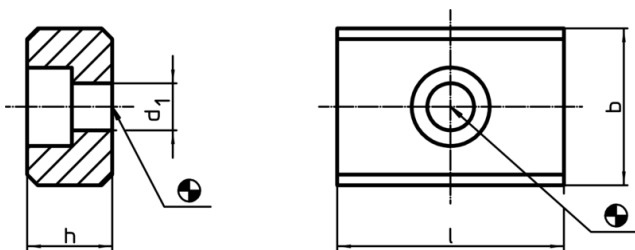
- Steel, case-hardened, blackened, ground

Assembly

They are bolted into the alignment slots of the fixture. Low slot tenons are suitable for use where a fixture will only be used on machines having an identical slot width.



Drawing



Order information

b h6	h	Dimensions		d ₁	For screws ISO 4762	[g]	Art. No.
		l	[mm]				
12	8	20		5,5	M5 x 12	11	23130.0012

Application example

