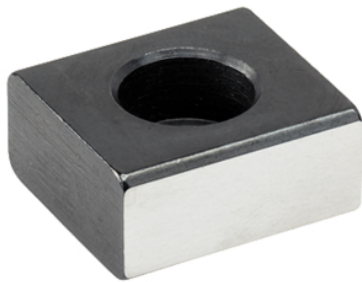


Low Slot Tenons

23130.0010



Product Description

To be used for locating fixtures and clamping elements onto machine tables with T-slots to DIN 650.

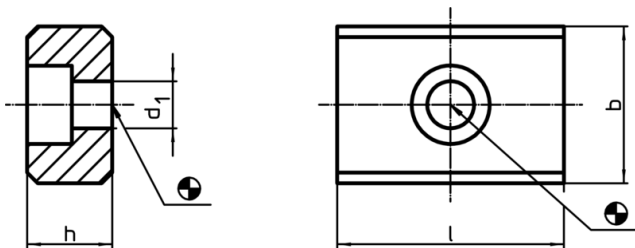
Material

- Steel, case-hardened, blackened, ground

Assembly

They are bolted into the alignment slots of the fixture. Low slot tenons are suitable for use where a fixture will only be used on machines having an identical slot width.

Drawing



Order information

b h6	h	Dimensions		d ₁	For screws ISO 4762	[g]	Art. No.
		l	[mm]				
10	8	20		4,5	M4 x 10	10	23130.0010

Application example

