

Loose Slot Tenons • DIN 6323

23120.0020



Product Description

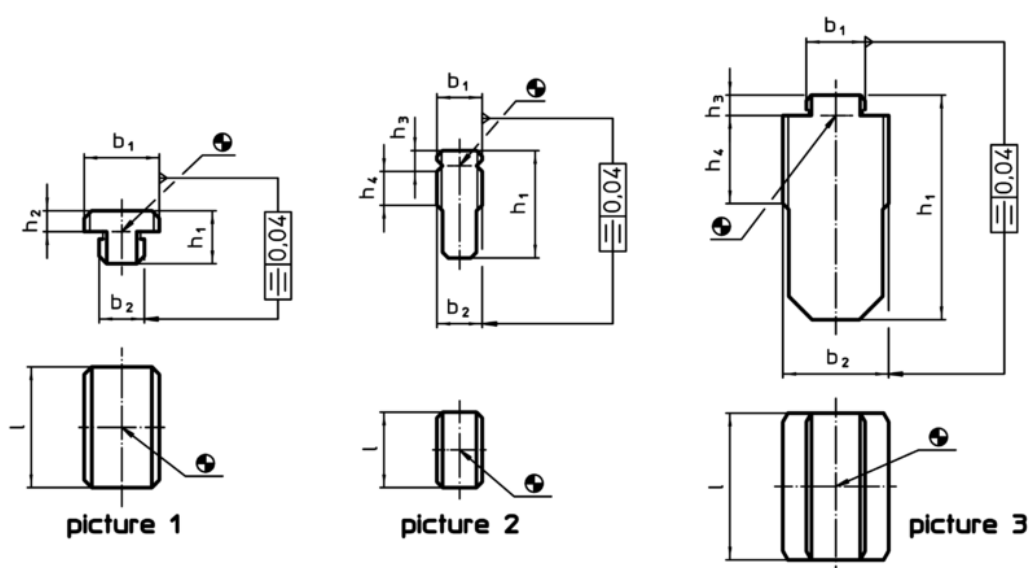
To be used for locating fixtures and clamping elements onto machine tables with T-slots to DIN 650.

Being simply pushed into position after fixture or clamping element has been roughly positioned, they cannot cause damage to the machine as could protruding fixed slot tenons or low slot tenons.

Material

- Steel, case-hardened, blackened, ground

Drawing



Order information

T-slot size fixture b_1 h_6 [mm]	T-slot size machine b_2 h_6 [mm]	Dimensions				[g]	Art. No.
		h_1	h_3	h_4	l		
form B, $b_1 = b_2$ – picture 2							
20	20	45,5	7	16	32	202	23120.0020

Application example

