

## Loose Slot Tenons • DIN 6323

23120.0011



### Product Description

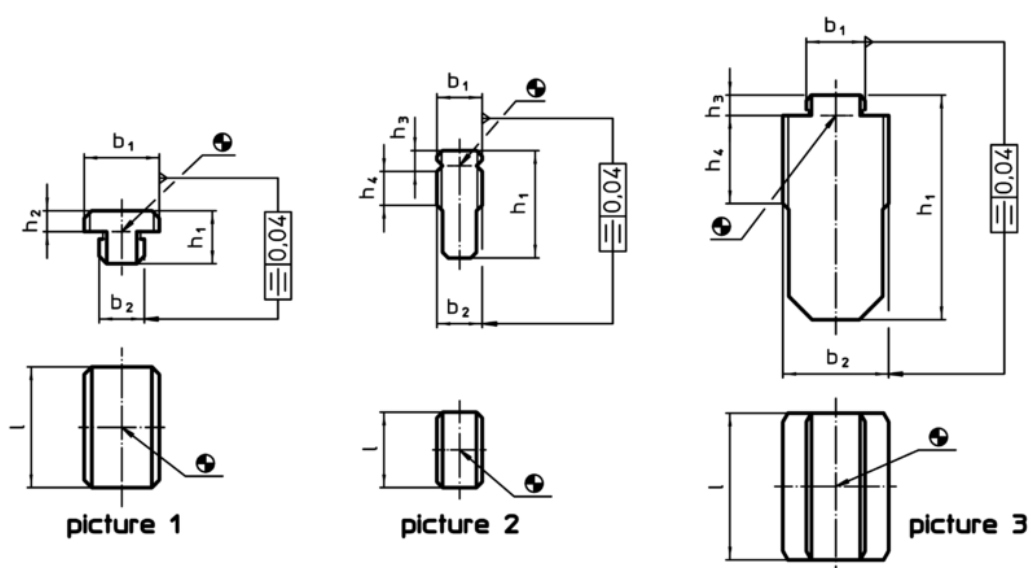
To be used for locating fixtures and clamping elements onto machine tables with T-slots to DIN 650.

Being simply pushed into position after fixture or clamping element has been roughly positioned, they cannot cause damage to the machine as could protruding fixed slot tenons or low slot tenons.

### Material

- Steel, case-hardened, blackened, ground

### Drawing



### Order information

T-slot size fixture $b_1$ $h_6$ [mm]	T-slot size machine $b_2$ $h_6$ [mm]	Dimensions				[g]	Art. No.
		$h_1$	$h_3$	$h_4$	$l$		
form B, $b_1 = b_2$ – picture 2							
12	12	28,6	5,5	9	20	46	23120.0011

Application example

