

## Bushings for positioning clamping pins

23111.0806



### Product Description

#### Material

- Stainless steel 1.4112, hardened

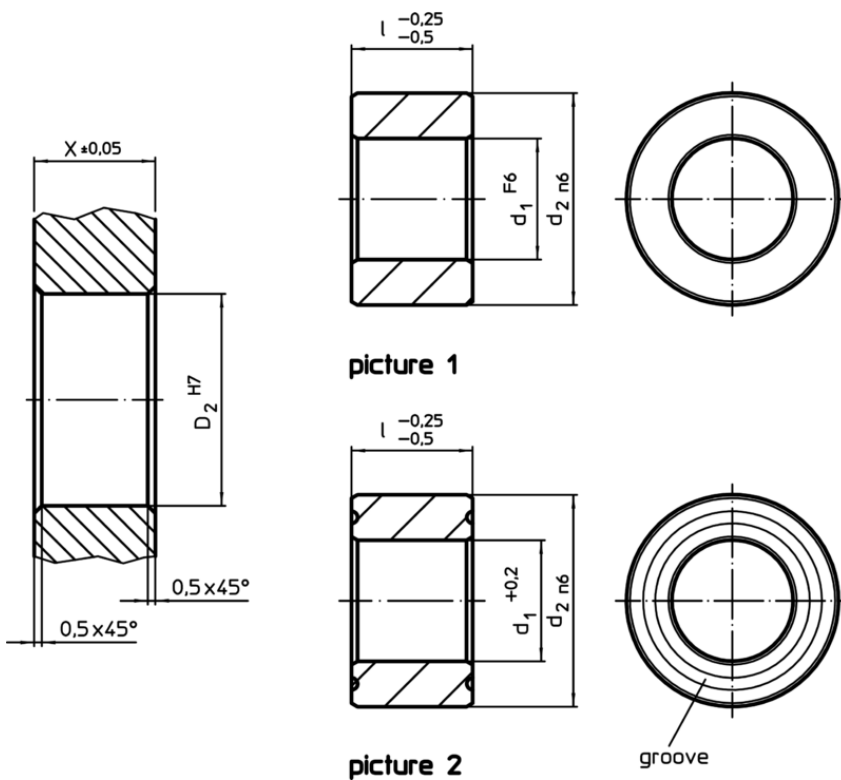
#### Assembly

Two centering bushes and two floating bushes are to be mounted into the plate to be clamped in order to guarantee an optimal repeatability.

#### Characteristic

The floating bush has a groove that serves as a differentiation mark.

### Drawing



### Order information

| d <sub>1</sub>                       | Dimensions<br>l       | d <sub>2</sub> | Location hole |                | [g] | Art. No.   |
|--------------------------------------|-----------------------|----------------|---------------|----------------|-----|------------|
|                                      |                       |                | X             | D <sub>2</sub> |     |            |
| F6                                   | -0,25<br>-0,5<br>[mm] | n6             | ±0,05         | H7             |     |            |
| central – picture 1, Stainless steel |                       |                |               |                |     |            |
| 20                                   | 20                    | 35             | 20            | 35             | 100 | 23111.0806 |

Application example

