

## Positioning Clamping Pins

23111.0018



### Product Description

The positioning clamping pin allows fast clamping, fastening, adjusting, changing and securing of workpieces, plates, fixture systems etc.

### Material

- Heat-treated steel, tempered, blackened

### Operation

By tightening the clamping screws, the positioning clamping pin is centered and clamped with four balls in the locating bush. The clamping screw can be operated manually via a removable handle (Art.-Nr. 23111.0900/.0902) or via an hex. key.

### More information

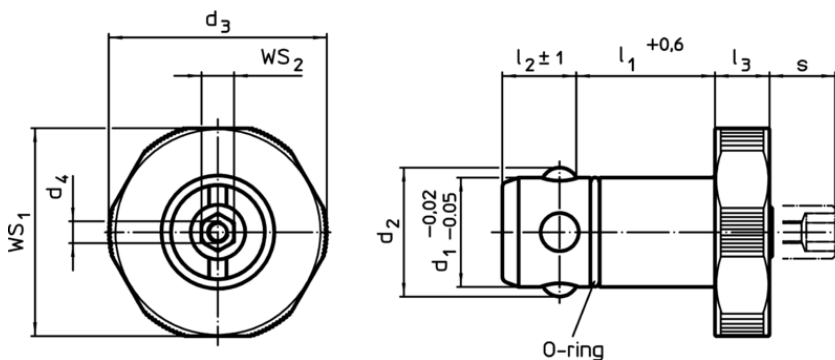
### Accessories

Suitable bushings are available.


### Further products

- Manual Handles, for positioning clamping pins
- Bushings, for positioning clamping pins
- Locating Bushings, for positioning clamping pins, for press fit
- Locating Bushings, for positioning clamping pins, for screw fit

### Drawing



### Order information

Dimensions									For base plates $\pm 0,05$ [mm]	$WS_1$ [mm]	$WS_2$ [mm]	Holding force [kN]	 [g]	Art. No.
$d_1$ -0,02 -0,05	$l_1$ +0,6	$d_2$	$d_3$	$d_4$	$l_2$ $\pm 1$	$l_3$	$s$ ~	[mm]						
Heat-treated steel														
16	30	18,7	32	M4	13,6	10	9	25	30	6	5	115	23111.0018	

Application example

