

Positioning Sensors• self-aligning, pneumatic

22800.0410



Product Description

Used in jigs and fixtures as positioning control for raw workpieces.

The response accuracy is constantly at 0,005 mm and can be achieved with a working pressure of 2,5 bar.

The system is monitored by the compressed-air backwash which indicated on the monitoring unit (Art. No. 22800.0612).

Material

Seal

- PVC

Supporting bar

- Steel, blackened

Ball

- Ball-bearing steel, hardened

Body

- Heat-treated steel, tempered, phosphated

Plug-in nipple

- Brass

More information

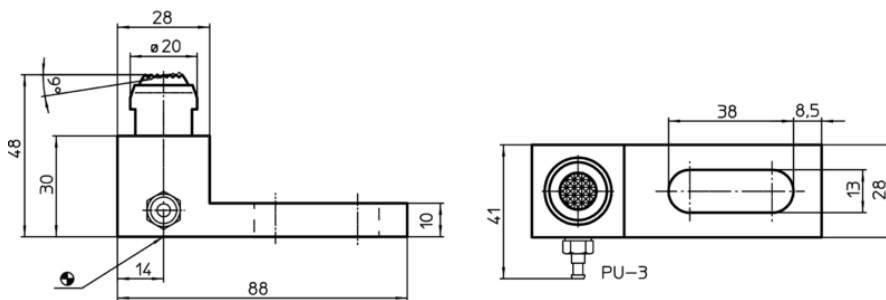
Notes

Further information on request.


Further products

- Monitoring Units for Positioning Sensors, pneumatic

Drawing



Order information

Load capacity for static load max. [kN]	 [g]	Art. No.
with holding bar		
15	321	22800.0410

Application example

