

## Thrust Screws with plastic pad

22760.0727



### Product Description

Thrust screws can be used for a gentle clamping or pressing of thread spindles, axes, shafts and surface treated parts.

### Material

#### Pad

- Thermoplastic POM, white

#### Screw

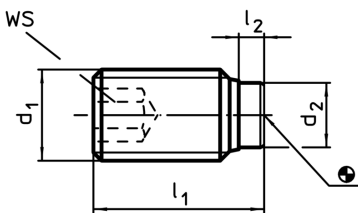
- Stainless steel 1.4305

### More information

#### Further products

- Thrust Screws, with brass pad

### Drawing



### Order information

d <sub>1</sub>	Dimensions			WS	Temperature		Weight	Art. No.
	l <sub>1</sub>	l <sub>2</sub>	d <sub>2</sub>		min.	max.		
	[mm]	[mm]	[mm]	[mm]	[°C]	[g]		
M12	65,1	2,1	8	6	-30	80	40	22760.0727