

Thrust Screws with plastic pad

22760.0726



Product Description

Thrust screws can be used for a gentle clamping or pressing of thread spindles, axes, shafts and surface treated parts.

Material

Pad

- Thermoplastic POM, white

Screw

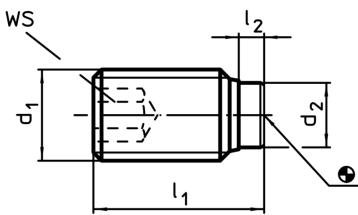
- Stainless steel 1.4305

More information

Further products

- Thrust Screws, with brass pad

Drawing



Order information

Dimensions				WS	Temperature		Weight	Art. No.
d ₁	l ₁ [mm]	l ₂ [mm]	d ₂	[mm]	min.	max.	[g]	
Stainless steel								
M12	52,1	2,1	8	6	-30	80	31	22760.0726