

## Thrust Screws with plastic pad

22760.0725



### Product Description

Thrust screws can be used for a gentle clamping or pressing of thread spindles, axes, shafts and surface treated parts.

### Material

#### Pad

- Thermoplastic POM, white

#### Screw

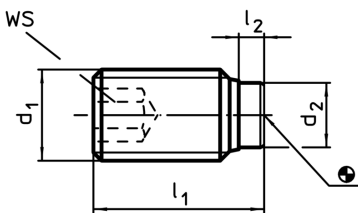
- Stainless steel 1.4305

### More information

#### Further products

- Thrust Screws, with brass pad

### Drawing



### Order information

Dimensions				WS	Temperature		Weight	Art. No.
d <sub>1</sub>	l <sub>1</sub> [mm]	l <sub>2</sub> [mm]	d <sub>2</sub>	[mm]	min.	max.	[g]	
Stainless steel					[°C]			
M12	42,1	2,1	8	6	-30	80	24	22760.0725