

## Thrust Screws with plastic pad

22760.0724



### Product Description

Thrust screws can be used for a gentle clamping or pressing of thread spindles, axes, shafts and surface treated parts.

### Material

#### Pad

- Thermoplastic POM, white

#### Screw

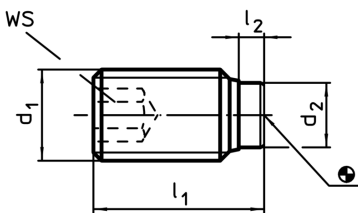
- Stainless steel 1.4305

### More information

#### Further products

- Thrust Screws, with brass pad

### Drawing



### Order information

Dimensions				WS	min.  max.			Art. No.
d <sub>1</sub>	l <sub>1</sub> [mm]	l <sub>2</sub> [mm]	d <sub>2</sub>	[mm]	[°C]		[g]	
<b>Stainless steel</b>								
M12	34,1	2,1	8	6	-30	80	19	22760.0724