

Thrust Screws with plastic pad

22760.0723



Product Description

Thrust screws can be used for a gentle clamping or pressing of thread spindles, axes, shafts and surface treated parts.

Material

Pad

- Thermoplastic POM, white

Screw

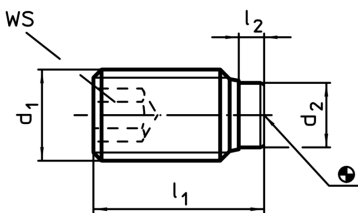
- Stainless steel 1.4305

More information

Further products

- Thrust Screws, with brass pad

Drawing



Order information

d ₁	Dimensions			WS	Temperature		Weight	Art. No.
	l ₁	l ₂	d ₂		min.	max.		
	[mm]	[mm]	[mm]	[mm]	[°C]	[g]		
M12	27,1	2,1	8	6	-30	80	10	22760.0723