

Thrust Screws with plastic pad

22760.0722



Product Description

Thrust screws can be used for a gentle clamping or pressing of thread spindles, axes, shafts and surface treated parts.

Material

Pad

- Thermoplastic POM, white

Screw

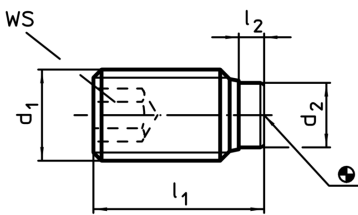
- Stainless steel 1.4305

More information

Further products

- Thrust Screws, with brass pad

Drawing



Order information

d ₁	Dimensions			WS	Temperature		Weight [g]	Art. No.
	l ₁ [mm]	l ₂ [mm]	d ₂ [mm]		min.	max.		
M12	22,1	2,1	8	6	-30	80	9	22760.0722