

Thrust Screws with plastic pad

22760.0702



Product Description

Thrust screws can be used for a gentle clamping or pressing of thread spindles, axes, shafts and surface treated parts.

Material

Pad

- Thermoplastic POM, white

Screw

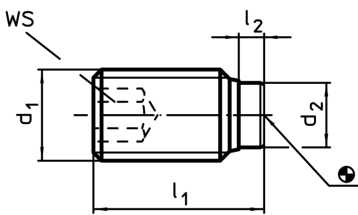
- Stainless steel 1.4305

More information

Further products

- Thrust Screws, with brass pad

Drawing



Order information

d ₁	Dimensions			WS	Temperature		Weight	Art. No.
	l ₁	l ₂	d ₂		min.	max.		
	[mm]			[mm]	[°C]		[g]	
M10	17,9	1,9	6,5	5	-30	80	5,2	22760.0702