

Thrust Screws with plastic pad

22760.0684



Product Description

Thrust screws can be used for a gentle clamping or pressing of thread spindles, axes, shafts and surface treated parts.

Material

Pad

- Thermoplastic POM, white

Screw

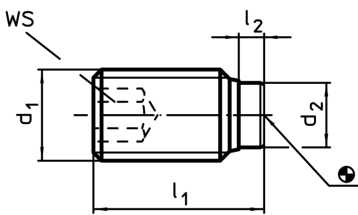
- Stainless steel 1.4305

More information

Further products

- Thrust Screws, with brass pad

Drawing



Order information

d ₁	Dimensions		d ₂	WS	min.	max.	[g]	Art. No.
	l ₁	l ₂						
M8	21,6	1,6	5	4	-30	80	5	22760.0684