

## Thrust Screws with plastic pad

22760.0664



### Product Description

Thrust screws can be used for a gentle clamping or pressing of thread spindles, axes, shafts and surface treated parts.

### Material

#### Pad

- Thermoplastic POM, white

#### Screw

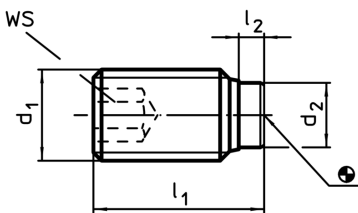
- Stainless steel 1.4305

### More information

#### Further products

- Thrust Screws, with brass pad

### Drawing



### Order information

Dimensions				WS	min.  max.			Art. No.
d <sub>1</sub>	l <sub>1</sub>	l <sub>2</sub>	d <sub>2</sub>	[mm]	[°C]		[g]	
Stainless steel								
M6	17,3	1,3	3,5	3	-30	80	2,2	22760.0664