

Thrust Screws with plastic pad

22760.0645



Product Description

Thrust screws can be used for a gentle clamping or pressing of thread spindles, axes, shafts and surface treated parts.

Material

Pad

- Thermoplastic POM, white

Screw

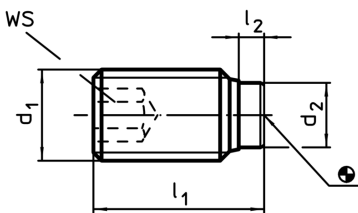
- Stainless steel 1.4305

More information

Further products

- Thrust Screws, with brass pad

Drawing



Order information

d ₁	Dimensions		d ₂	WS [mm]	min. max. [°C]		 [g]	Art. No.
	l ₁ ~ [mm]	l ₂ ~						
Stainless steel								
M4	13	1	2	2	-30	80	0,7	22760.0645