

Thrust Screws with plastic pad

22760.0636



Product Description

Thrust screws can be used for a gentle clamping or pressing of thread spindles, axes, shafts and surface treated parts.

Material

Pad

- Thermoplastic POM, white

Screw

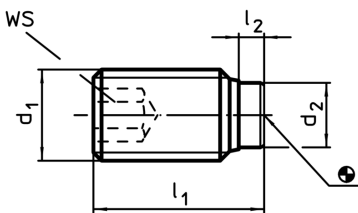
- Stainless steel 1.4305

More information

Further products

- Thrust Screws, with brass pad

Drawing



Order information

Dimensions				WS	min.	max.	[g]	Art. No.
d ₁	l ₁	l ₂	d ₂					
[mm]				[mm]				
Stainless steel								
M3	8,8	0,8	1,5	1,5	-30	80	0,4	22760.0636