

## Thrust Screws with plastic pad

22760.0634



### Product Description

Thrust screws can be used for a gentle clamping or pressing of thread spindles, axes, shafts and surface treated parts.

### Material

#### Pad

- Thermoplastic POM, white

#### Screw

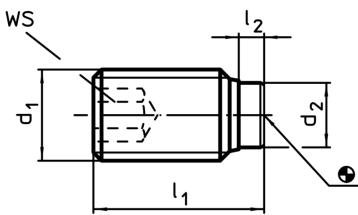
- Stainless steel 1.4305

### More information

#### Further products

- Thrust Screws, with brass pad

### Drawing



### Order information

Dimensions				WS	Temperature		Weight [g]	Art. No.
d <sub>1</sub>	l <sub>1</sub>	l <sub>2</sub>	d <sub>2</sub>		min.	max.		
[mm]				[mm]	[°C]			
Stainless steel								
M3	5,8	0,8	1,5	1,5	-30	80	0,3	22760.0634