

Thrust Screws with plastic pad

22760.0632



Product Description

Thrust screws can be used for a gentle clamping or pressing of thread spindles, axes, shafts and surface treated parts.

Material

Pad

- Thermoplastic POM, white

Screw

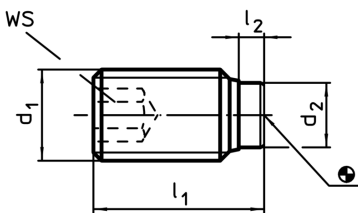
- Stainless steel 1.4305

More information

Further products

- Thrust Screws, with brass pad

Drawing



Order information

Dimensions				WS	Temperature		Weight	Art. No.
d ₁	l ₁	l ₂	d ₂		min.	max.		
[mm]				[mm]	[°C]		[g]	
Stainless steel								
M3	3,8	0,8	1,5	1,5	-30	80	0,2	22760.0632