

Thrust Screws with brass pad

22760.0524

Product Description

Thrust screws can be used for a gentle clamping or pressing of thread spindles, axes, shafts and surface treated parts.

Material

Pad

- Brass

Screw

- Stainless steel 1.4305

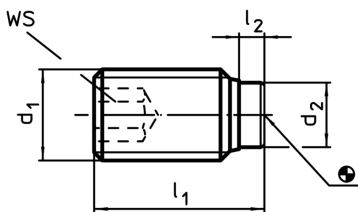
More information

Further products

- Thrust Screws, with plastic pad



Drawing



Order information

Dimensions				WS	max.		Art. No.
d ₁	l ₁	l ₂	d ₂	[mm]	[°C]	[g]	
Stainless steel							
M12	22,5	3,4	8,5	6	250	12	22760.0524

Application example

