

## Thrust Screws with brass pad

22760.0462



### Product Description

Thrust screws can be used for a gentle clamping or pressing of thread spindles, axes, shafts and surface treated parts.

### Material

#### Pad

- Brass

#### Screw

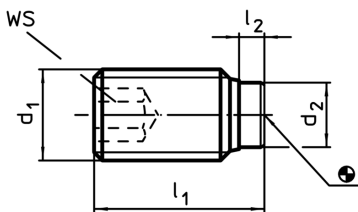
- Stainless steel 1.4305

### More information

#### Further products

- Thrust Screws, with plastic pad

### Drawing



### Order information

| Dimensions      |                |                |                | WS   | max. |     | Art. No.   |
|-----------------|----------------|----------------|----------------|------|------|-----|------------|
| d <sub>1</sub>  | l <sub>1</sub> | l <sub>2</sub> | d <sub>2</sub> | [mm] | [°C] | [g] |            |
| Stainless steel |                |                |                |      |      |     |            |
| M6              | 11,5           | 1,9            | 4              | 3    | 250  | 1,7 | 22760.0462 |

### Application example

