

## Thrust Screws with plastic pad

22760.0303



### Product Description

Thrust screws can be used for a gentle clamping or pressing of thread spindles, axes, shafts and surface treated parts.

### Material

#### Pad

- Thermoplastic POM, white

#### Screw

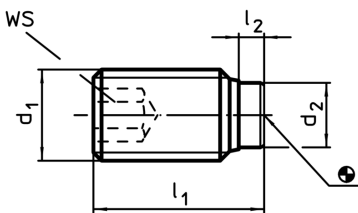
- Steel, blackened

### More information

#### Further products

- Thrust Screws, with brass pad

### Drawing



### Order information

d <sub>1</sub>	Dimensions			WS	Temperature		Weight	Art. No.
	l <sub>1</sub>	l <sub>2</sub>	d <sub>2</sub>		min.	max.		
	[mm]			[mm]	[°C]		[g]	
Steel								
M10	21,9	1,9	6,5	5	-30	80	7,1	22760.0303