

Thrust Screws with plastic pad

22760.0290



Product Description

Thrust screws can be used for a gentle clamping or pressing of thread spindles, axes, shafts and surface treated parts.

Material

Pad

- Thermoplastic POM, white

Screw

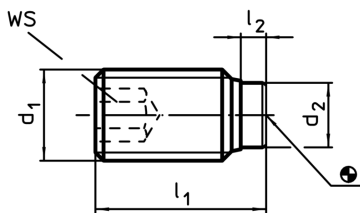
- Steel, blackened

More information

Further products

- Thrust Screws, with brass pad

Drawing



Order information

| d ₁ | Dimensions | | | d ₂ | WS | Temperature | | Weight | Art. No. |
|----------------|----------------|----------------|---|----------------|----|-------------|------|--------|------------|
| | l ₁ | l ₂ | | | | min. | max. | | |
| | [mm] | [mm] | | [mm] | | [°C] | [g] | | |
| Steel | | | | | | | | | |
| M8 | 64,6 | 1,6 | 5 | 4 | | -30 | 80 | 18 | 22760.0290 |