

## Thrust Screws with plastic pad

22760.0287



### Product Description

Thrust screws can be used for a gentle clamping or pressing of thread spindles, axes, shafts and surface treated parts.

### Material

#### Pad

- Thermoplastic POM, white

#### Screw

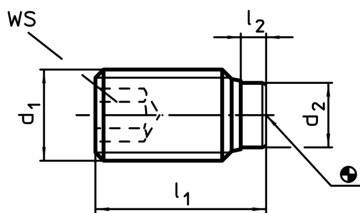
- Steel, blackened

### More information

#### Further products

- Thrust Screws, with brass pad

### Drawing



### Order information

d <sub>1</sub>	Dimensions			d <sub>2</sub>	WS [mm]	Temperature range		Weight [g]	Art. No.
	l <sub>1</sub> ~ [mm]	l <sub>2</sub> ~	min. [°C]			max.			
<b>M8</b>	<b>41,6</b>	1,6	5	4	-30	80	11	<b>22760.0287</b>	