

Thrust Screws with plastic pad

22760.0284



Product Description

Thrust screws can be used for a gentle clamping or pressing of thread spindles, axes, shafts and surface treated parts.

Material

Pad

- Thermoplastic POM, white

Screw

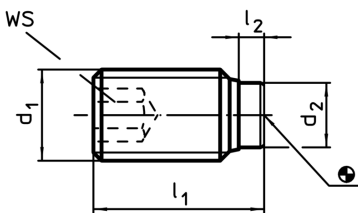
- Steel, blackened

More information

Further products

- Thrust Screws, with brass pad

Drawing



Order information

d ₁	Dimensions			WS	min.	max.	[g]	Art. No.
	l ₁	l ₂	d ₂					
	[mm]	[mm]	[mm]	[mm]	[°C]			
Steel								
M8	21,6	1,6	5	4	-30	80	5	22760.0284