

Thrust Screws with plastic pad

22760.0283



Product Description

Thrust screws can be used for a gentle clamping or pressing of thread spindles, axes, shafts and surface treated parts.

Material

Pad

- Thermoplastic POM, white

Screw

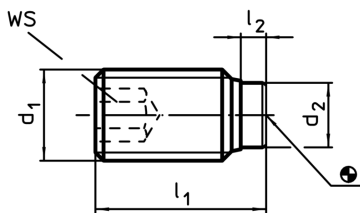
- Steel, blackened

More information

Further products

- Thrust Screws, with brass pad

Drawing



Order information

d ₁	Dimensions			d ₂	WS [mm]	min. max. [°C]		 [g]	Art. No.
	l ₁ ~ [mm]	l ₂ ~							
M8	17,6	1,6	5	4	-30	80	3,6	22760.0283	