

Thrust Screws with plastic pad

22760.0266



Product Description

Thrust screws can be used for a gentle clamping or pressing of thread spindles, axes, shafts and surface treated parts.

Material

Pad

- Thermoplastic POM, white

Screw

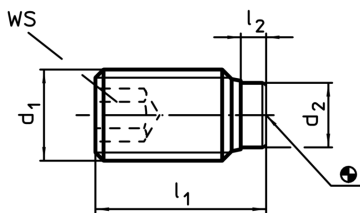
- Steel, blackened

More information

Further products

- Thrust Screws, with brass pad

Drawing



Order information

| Dimensions | | | | WS | min. max. | | | Art. No. |
|----------------|----------------|----------------|----------------|------|------------|----|-----|------------|
| d ₁ | l ₁ | l ₂ | d ₂ | [mm] | [°C] | | [g] | |
| Steel | | | | | | | | |
| M6 | 26,3 | 1,3 | 3,5 | 3 | -30 | 80 | 3,8 | 22760.0266 |