

Thrust Screws with plastic pad

22760.0264



Product Description

Thrust screws can be used for a gentle clamping or pressing of thread spindles, axes, shafts and surface treated parts.

Material

Pad

- Thermoplastic POM, white

Screw

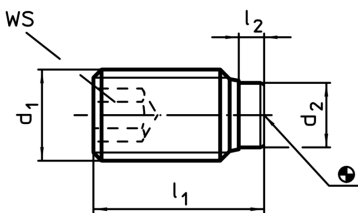
- Steel, blackened

More information

Further products

- Thrust Screws, with brass pad

Drawing



Order information

Dimensions				WS	min. max.			Art. No.
d ₁	l ₁	l ₂	d ₂	[mm]	[°C]		[g]	
[mm]				[mm]				
M6	17,3	1,3	3,5	3	-30	80	2,2	22760.0264