

Thrust Screws with plastic pad

22760.0257



Product Description

Thrust screws can be used for a gentle clamping or pressing of thread spindles, axes, shafts and surface treated parts.

Material

Pad

- Thermoplastic POM, white

Screw

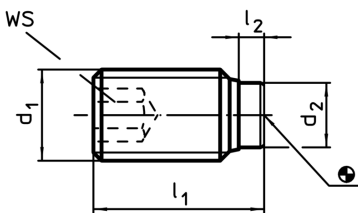
- Steel, blackened

More information

Further products

- Thrust Screws, with brass pad

Drawing



Order information

d ₁	Dimensions			WS	min. max.		[g]	Art. No.
	l ₁	l ₂	d ₂		[°C]			
	[mm]	[mm]		[mm]				
Steel								
M5	26	1	3	2,5	-30	80	2,6	22760.0257