

Thrust Screws with plastic pad

22760.0254



Product Description

Thrust screws can be used for a gentle clamping or pressing of thread spindles, axes, shafts and surface treated parts.

Material

Pad

- Thermoplastic POM, white

Screw

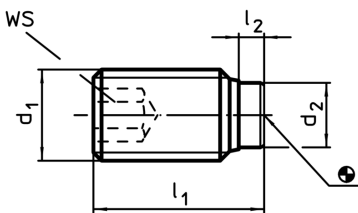
- Steel, blackened

More information

Further products

- Thrust Screws, with brass pad

Drawing



Order information

Dimensions				WS	Temperature		Weight	Art. No.
d ₁	l ₁ ~ [mm]	l ₂ ~	d ₂		min.	max.		
M5	13	1	3	2,5	-30	80	1	22760.0254