

## Thrust Screws with plastic pad

22760.0253



### Product Description

Thrust screws can be used for a gentle clamping or pressing of thread spindles, axes, shafts and surface treated parts.

### Material

#### Pad

- Thermoplastic POM, white

#### Screw

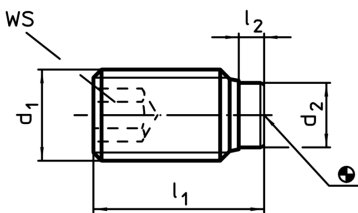
- Steel, blackened

### More information

#### Further products

- Thrust Screws, with brass pad

### Drawing



### Order information

d <sub>1</sub>	Dimensions			WS	min.  max.		[g]	Art. No.
	l <sub>1</sub>	l <sub>2</sub>	d <sub>2</sub>		[°C]			
	[mm]			[mm]				
Steel								
M5	11	1	3	2,5	-30	80	0,8	22760.0253