

## Thrust Screws with plastic pad

22760.0244



### Product Description

Thrust screws can be used for a gentle clamping or pressing of thread spindles, axes, shafts and surface treated parts.

#### Material

##### Pad

- Thermoplastic POM, white

##### Screw

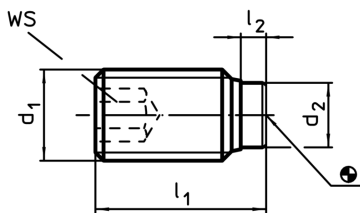
- Steel, blackened

#### More information

##### Further products

- Thrust Screws, with brass pad

### Drawing



### Order information

d <sub>1</sub>	Dimensions		d <sub>2</sub>	WS	min.  max.		[g]	Art. No.
	l <sub>1</sub>	l <sub>2</sub>			[°C]			
	[mm]			[mm]				
Steel								
M4	11	1	2	2	-30	80	0,6	22760.0244