

Thrust Screws with plastic pad

22760.0242



Product Description

Thrust screws can be used for a gentle clamping or pressing of thread spindles, axes, shafts and surface treated parts.

Material

Pad

- Thermoplastic POM, white

Screw

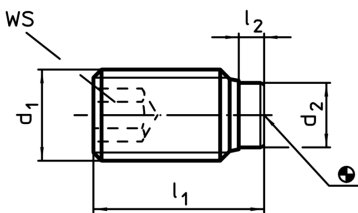
- Steel, blackened

More information

Further products

- Thrust Screws, with brass pad

Drawing



Order information

d ₁	Dimensions		d ₂	WS	min. max.		[g]	Art. No.
	l ₁	l ₂			[°C]			
Steel								
M4	7	1	2	2	-30	80	0,3	22760.0242