

## Thrust Screws with brass pad

22760.0088

### Product Description

Thrust screws can be used for a gentle clamping or pressing of thread spindles, axes, shafts and surface treated parts.

### Material

#### Pad

- Brass

#### Screw

- Heat-treated steel,  $1200 \pm 100 \text{ N/mm}^2$

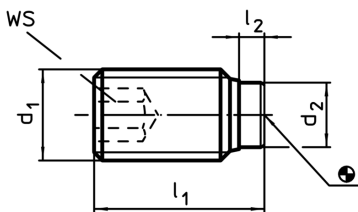
### More information

#### Further products

- Thrust Screws, with plastic pad



### Drawing



### Order information

Dimensions				WS	max.		Art. No.
d <sub>1</sub>	l <sub>1</sub>	l <sub>2</sub>	d <sub>2</sub>	[mm]	[°C]	[g]	
Heat-treated steel							
M8	32	2,5	5,5	4	250	8,9	22760.0088

### Application example

