

Thrust Screws with brass pad

22760.0032



Product Description

Thrust screws can be used for a gentle clamping or pressing of thread spindles, axes, shafts and surface treated parts.

Material

Pad

- Brass

Screw

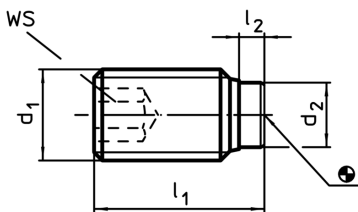
- Heat-treated steel, $1200 \pm 100 \text{ N/mm}^2$

More information

Further products

- Thrust Screws, with plastic pad

Drawing



Order information

Dimensions				WS	max.		Art. No.
d ₁	l ₁	l ₂	d ₂	[mm]	[°C]	[g]	
Heat-treated steel							
[mm]	[mm]	[mm]	[mm]	[mm]	[°C]	[g]	
M3	5	1	1,5	1,5	250	0,2	22760.0032

Application example

