

Ball Casters with mounting elements

22750.0124

Product Description



Material

Cap

- Steel, zinc-plated by galvanization

Housing

- Steel, zinc-plated by galvanization

Ball

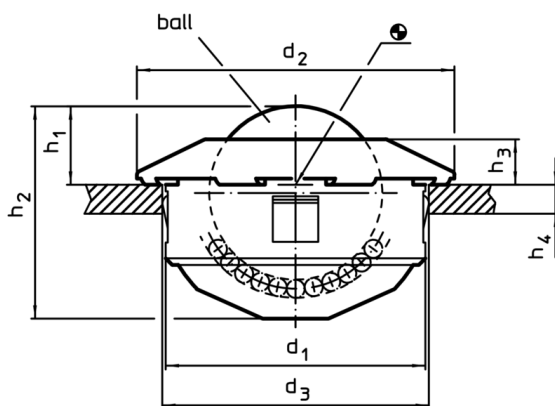
- Stainless steel

Assembly

Mounting is carried-out by means of spring-loaded claws allowing big tolerances in the location hole.

The ball casters can easily be mounted and disassembled from their functional side. Due to the inclined cap form, the assembly mandrel EH 22750. should be used.

Drawing



Order information

d ₁ -0,13	Ball Ø	d ₂	Dimensions				Location hole D ₁ [mm]	Carrying figure C [N]	[g]	Art. No.
			h ₁ ±0,2 [mm]	h ₂	h ₃	h ₄ min.				
ball from stainless steel										
24	15	31	9,5	20,5	5,5	1,5	24	370	42	22750.0124

Accessories

Suitable for ball caster [mm]		[g]	Art. No.
assembly tool			
24		451	22750.0144
36		480	22750.0148
45		503	22750.0152

Application example

