

Self-Aligning Pads· adjustable with self-resetting

22741.0117



Product Description

Self-aligning pads are used as stop, support and thrust pad and are suitable for installation in clamping elements.
By resetting to the parallel position the contact point of the self-aligning pad provides a defined initial position, thus preventing the pad clamping in an oblique position when inserting the workpiece.

Material

Spring element

- Thermoplastic PUR

Ball

- Stainless steel 1.3541, nickel-plated

Body

- Stainless steel 1.4057, heat-treated

Nut

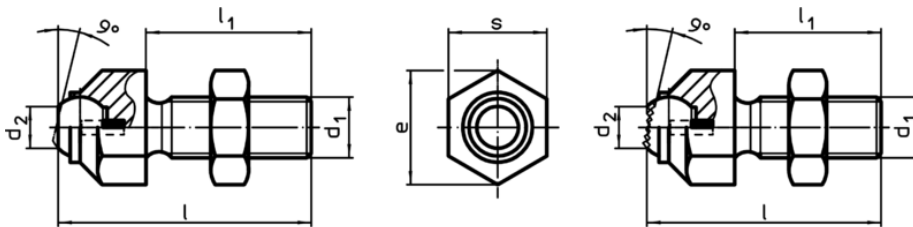
- Stainless steel

More information

Notes

Ball protected against rotating.
Loading capacity valid for steel and stainless steel designs.
Special types on request.


Drawing



picture 1

picture 2

Order information

s	d ₁	Dimensions					Ball	Load capacity for static load max. [kN]	Tightening torque max. [Nm]	 [g]	Art. No.
		l	l ₁	d ₂	e	[mm]					
with flat-faced ball, plain surface – picture 1, Stainless steel											
17	M12	50,7	35	8,6	19	12	15	82	55	22741.0117	