

## Self-Aligning Pads · adjustable with self-resetting

22741.0113



### Product Description

Self-aligning pads are used as stop, support and thrust pad and are suitable for installation in clamping elements.  
By resetting to the parallel position the contact point of the self-aligning pad provides a defined initial position, thus preventing the pad clamping in an oblique position when inserting the workpiece.

### Material

#### Spring element

- Thermoplastic PUR

#### Ball

- Stainless steel 1.3541, nickel-plated

#### Body

- Stainless steel 1.4057, heat-treated

#### Nut

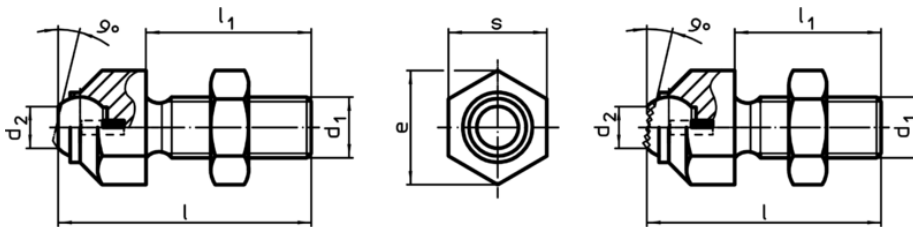
- Stainless steel

### More information

#### Notes

Ball protected against rotating.  
Loading capacity valid for steel and stainless steel designs.  
Special types on request.


### Drawing



picture 1

picture 2

### Order information

s	d <sub>1</sub>	l	Dimensions				Ball	Load capacity for static load max. [kN]	Tightening torque max. [Nm]	 [g]	Art. No.
			l <sub>1</sub>	d <sub>2</sub>	e	[mm]					
with flat-faced ball, plain surface – picture 1, Stainless steel											
13	M8	36,6	25	5,8	14,5	8,5	8	25	19	22741.0113	